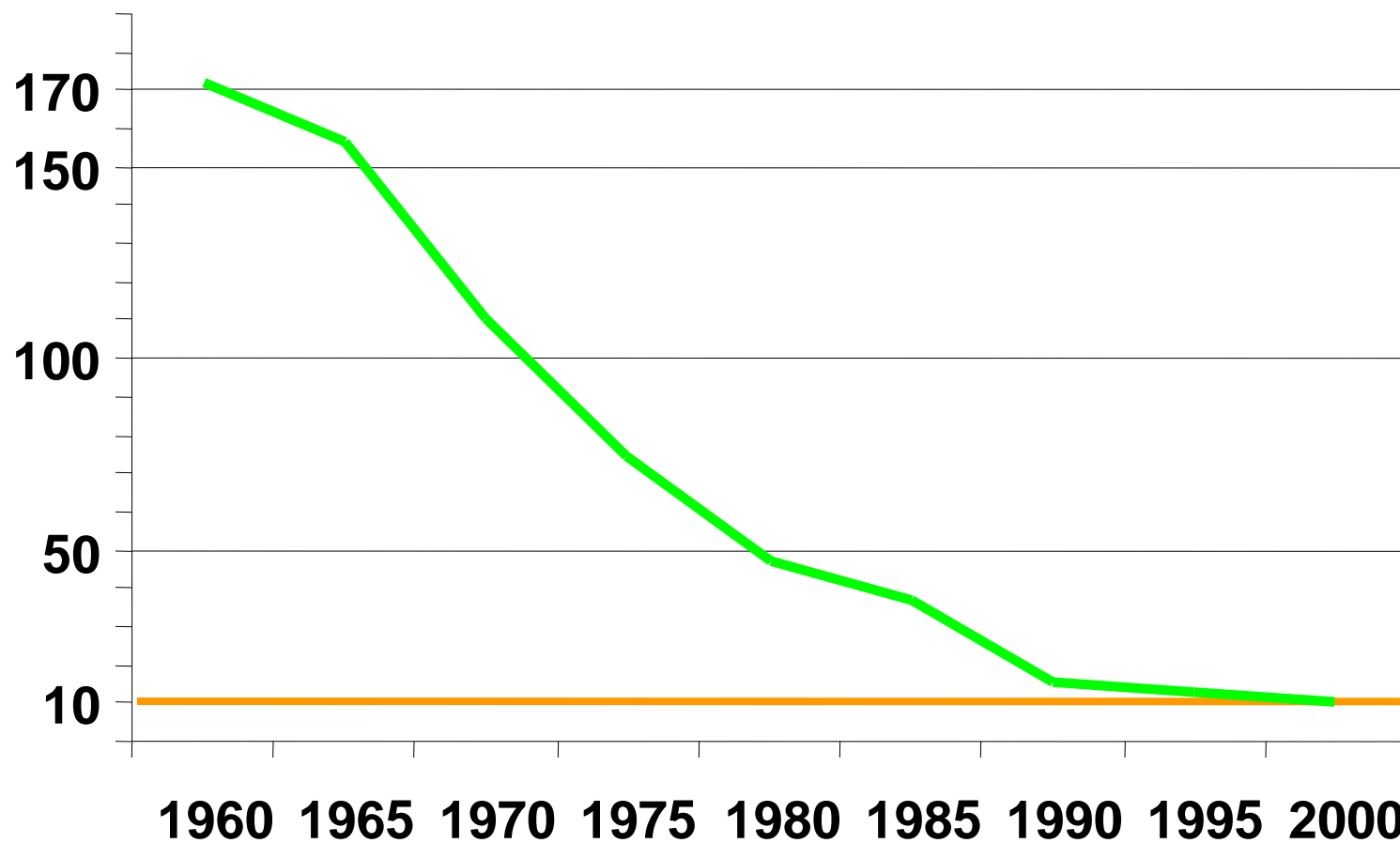




Situation and problems in TB control in Finland

Rauni Ruohonen
Chief physician, FILHA

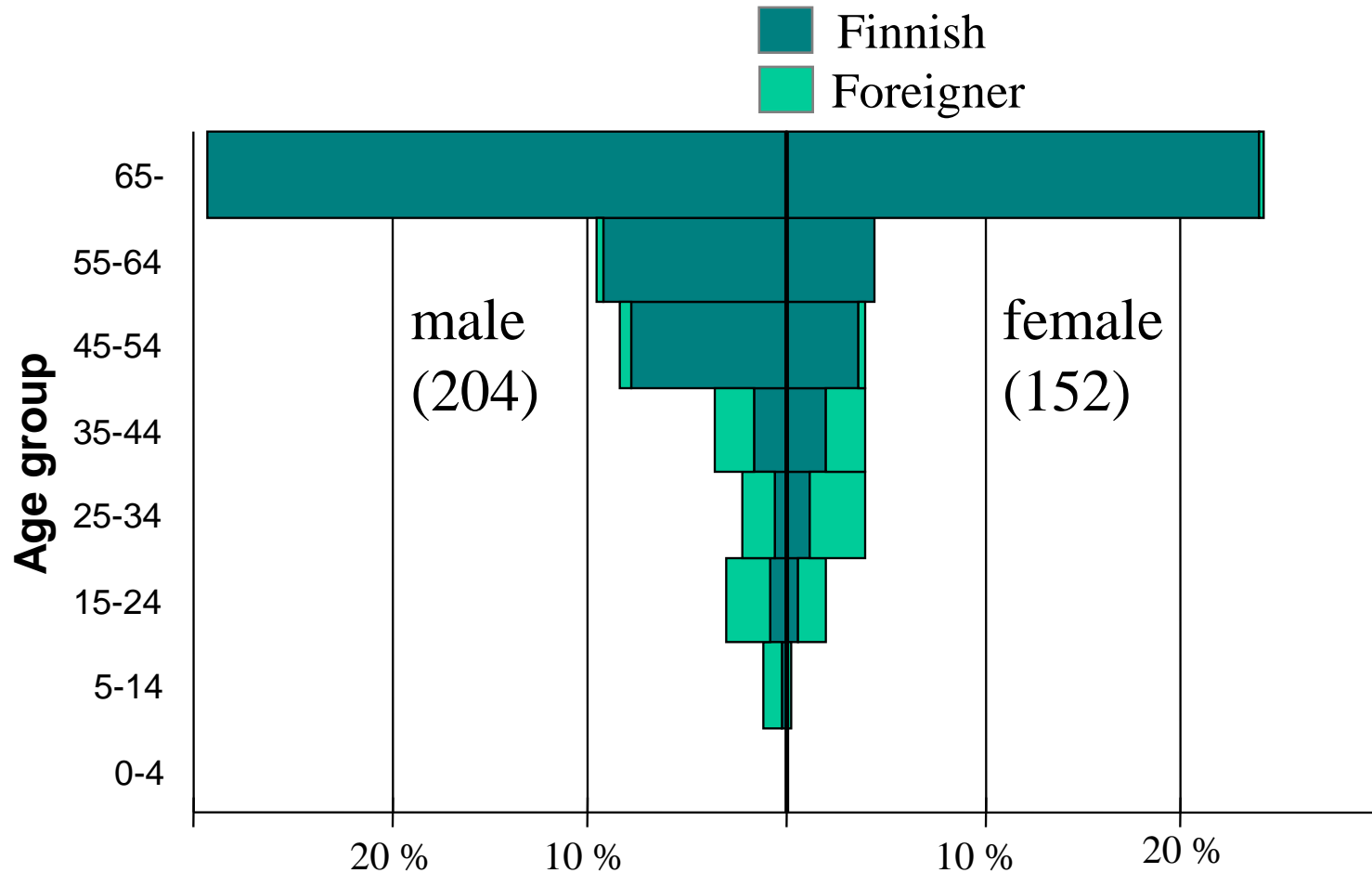
TB incidence/100 000 in Finland



Tuberculosis notification cases, rates by previous treatment and foreign origin

Year	New		Previously treated		Foreign origin from
	N	Rate	N	Rate	new %
2000	546	10.6		0.0	8,6
2001	501	9.7		0.0	13,2
2002	476	9.2	1	0.0	10,3
2003	412	7.9	3	0.1	12,3
2004	329	6.3	7	0.1	12,5
2005	354	6.8	18	0.3	14,5
2006	281	5.3	16	0.3	17,8
2007	333	6.3	15	0.3	21,3
2008	328	6.2	16	0.3	15,7
2009	405	7.6	14	0.3	30,1

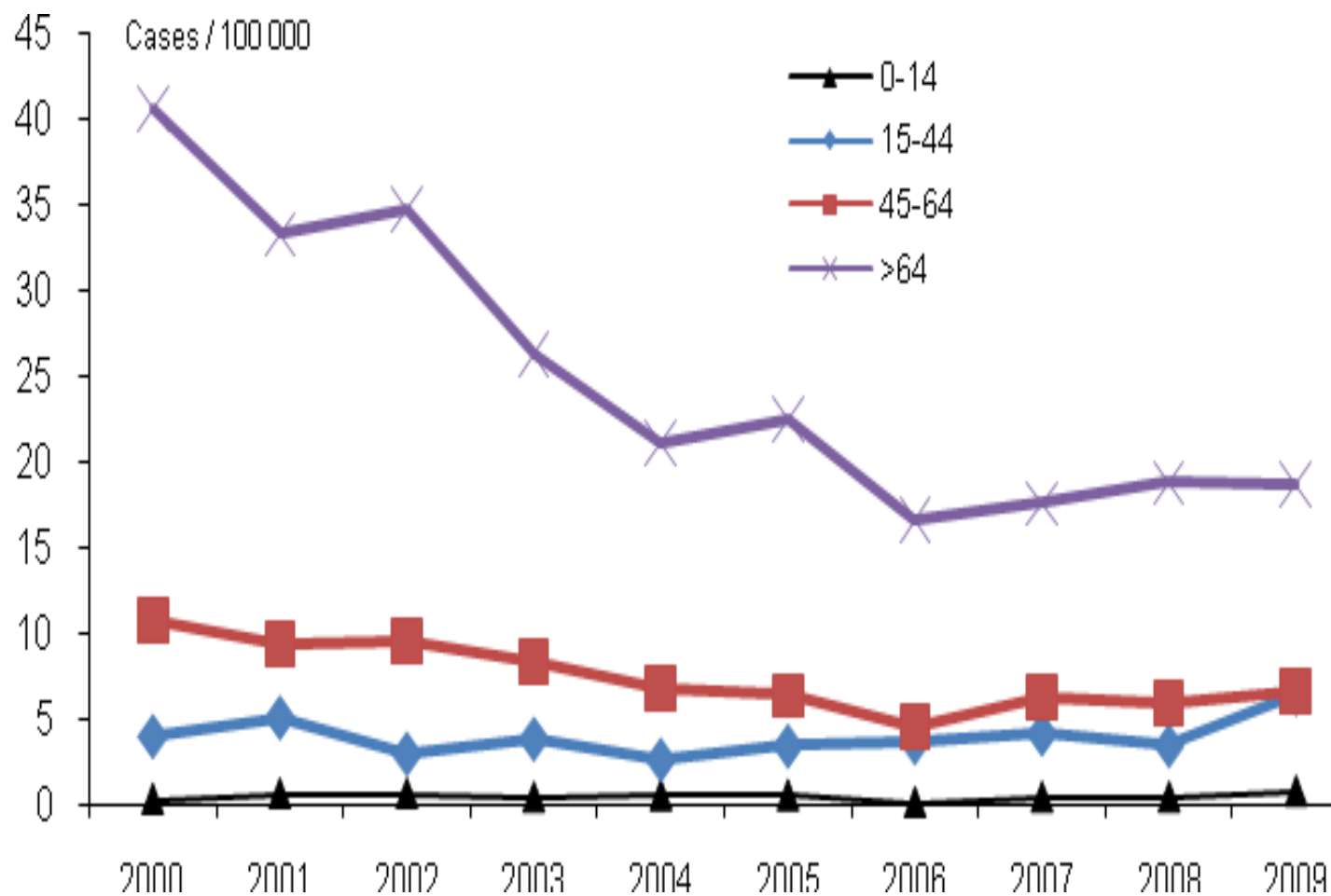
TB cases according to patients age, gender and origin in 2005



Treatment Outcome results for new culture-confirmed pulmonary TB cases diagnosed in 2007 and 2008

	Success	Died	Failed	Default	Still on treatm.	Unknown	Total
2007	130	35	1	2	7	6	181
%	71,8	19,3	0,6	1,1	3,9	3,3	100
2008	123	27	1	2	9	8	170
%	72,4	15,9	0,6	1,2	5,3	4,7	100

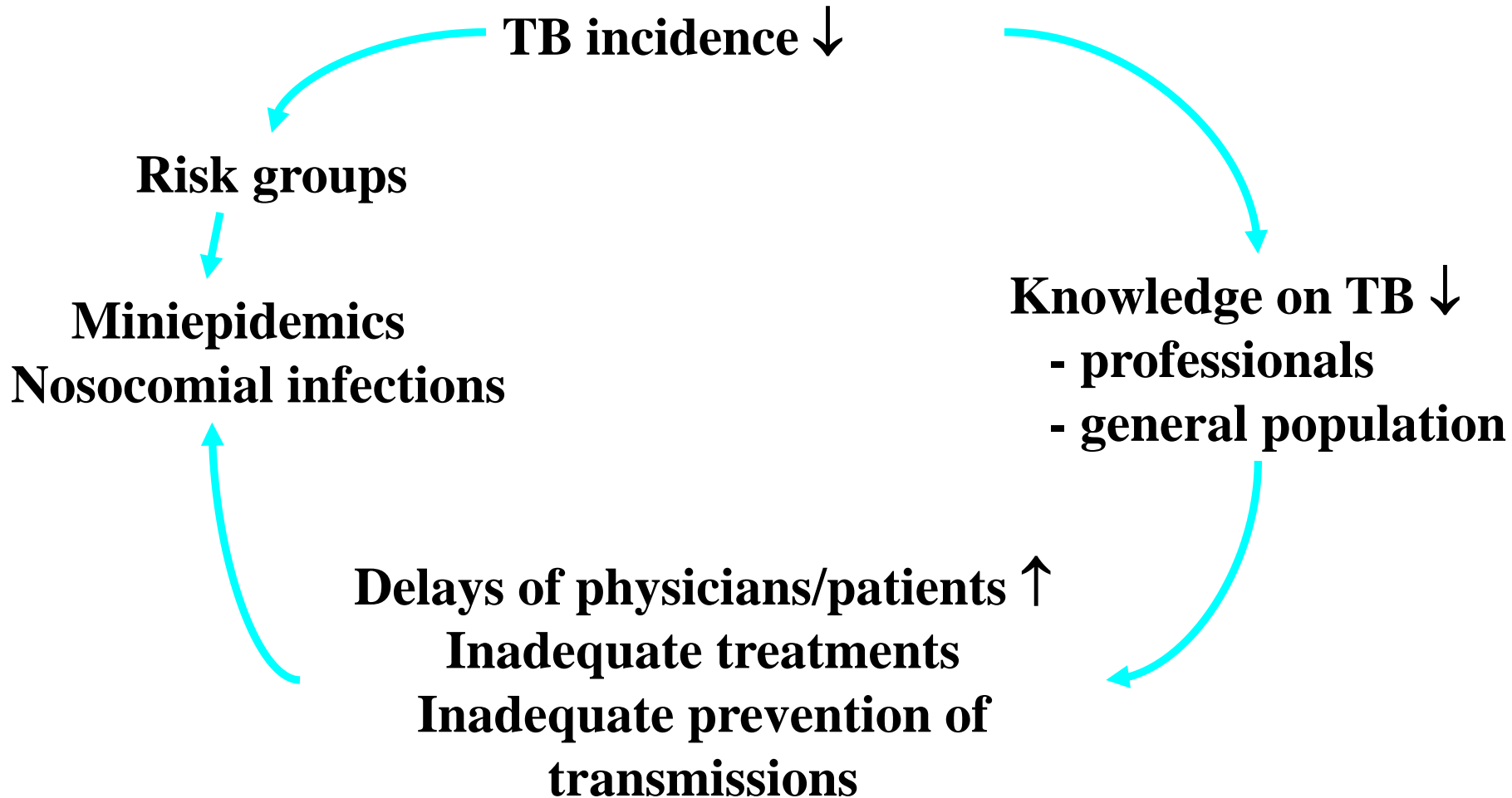
Notification rates by age groups



TB in Finland

- TB incidence 7,6 / 100 000 (2009)
- ~ 40 MDR cases up today (0,4 -2%)
- ~ 80 TB/HIV cumulative cases (1-9 yearly = 1,4% of TB cases 2009)
- 20-30% of all detected TB cases foreign-born
- 0-2 cases in penitentiary care yearly
- Knowledge on TB decreases

Problems in low TB incidence



Measures to meet the challenges

- Training of HCW's
- Improving national supervision and guidance, introduction of two national expert groups
- Increasing DOT, standardisation of treatment monitoring, treatment outcome monitoring
- Specific risk group measures
- Improved prevention of transmission of TB in institutions

TRAINING IN THE NATIONAL TUBERCULOSIS PROGRAM IN 2007-2010

Project

Informing the public of the TB-program

Improving the basic knowledge on TB

Organising TB-training for different focus groups

Enhancing the development of HD TB programs and local networking

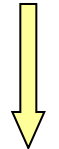
TB presentation bank for training use



Hospital district trainings

Web-based training

Other trainings



Training on implementation of the TB program in local level covering all hospital districts in 2007

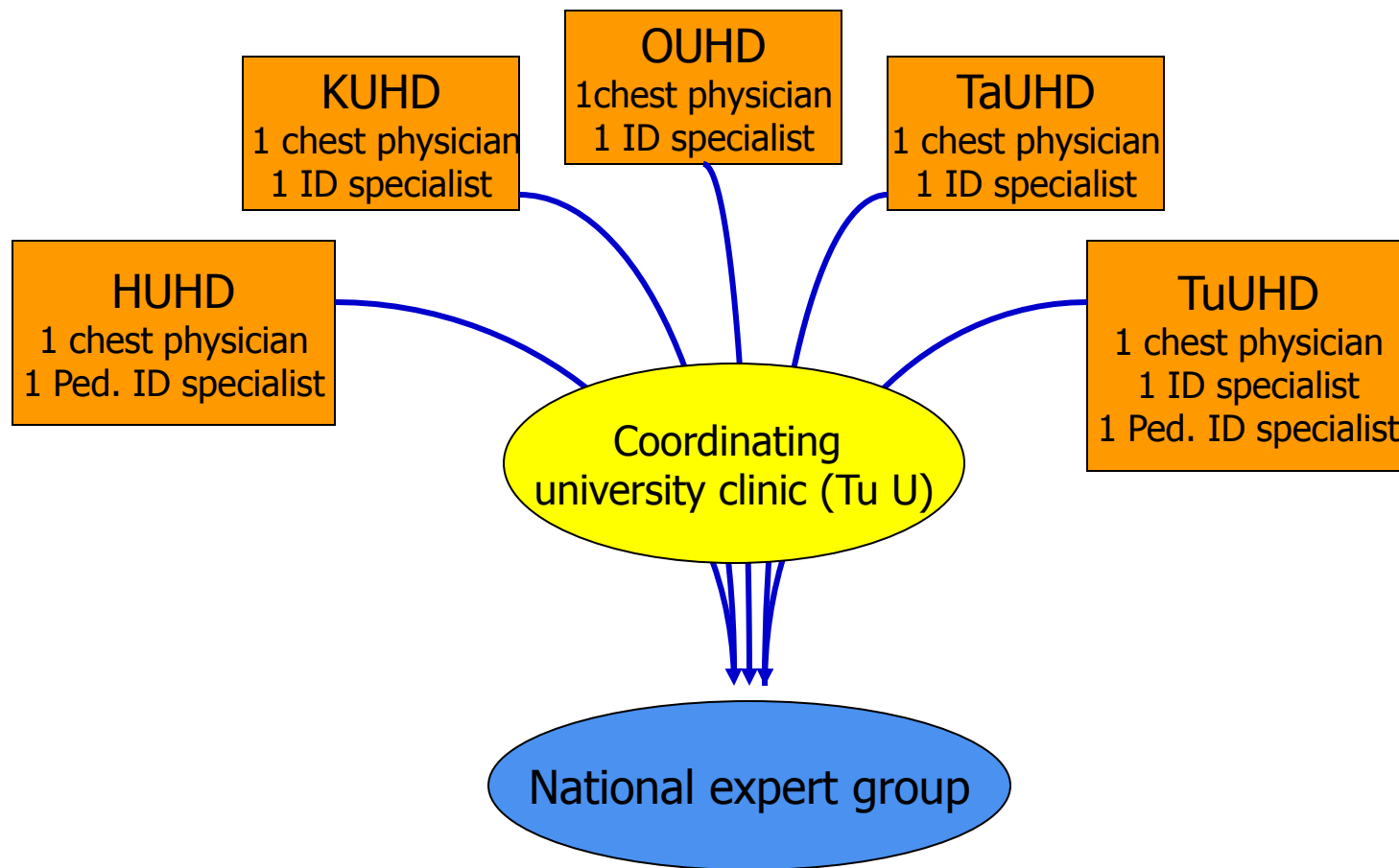
Open web training package for professionals and students in health care

- nurses, public health staff
- occupational health care
- staff in refugee centres
- penitentiary care
- TB presentation library

Objectives

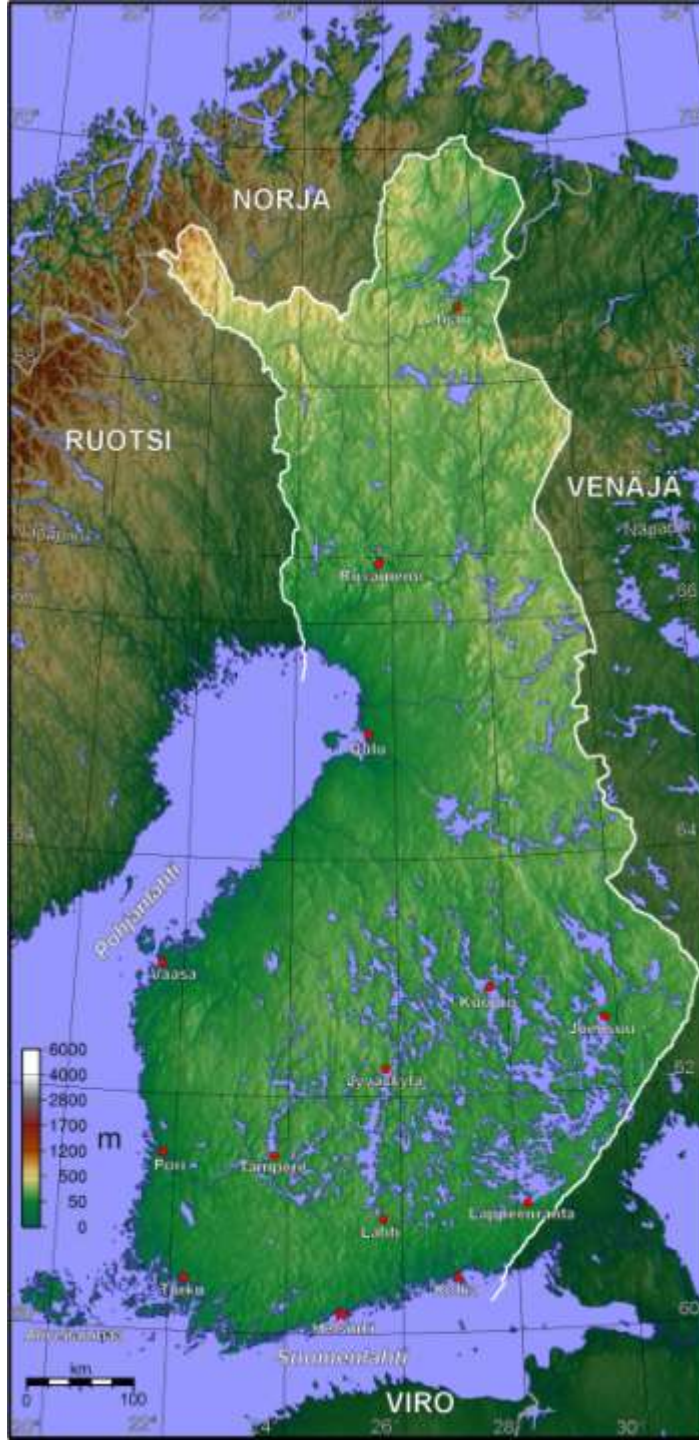
Components

National expert group for TB treatment



Improving risk group measures

- Screening
 - Immigrants from high incidence countries
 - Elderly ≥ 75 years of age
 - Homeless and drug- or alcohol abusers
- Contact investigations
- DOT
- LTBI treatments
- BCG targeted to risk groups



- Different parts of the country have different problems



Helsinki and Southern Finland county

- 117 - 152 TB cases yearly
- Incidence 6,73
- 7 prisons
- Several centres for asylum seekers
- Close contacts to Tallinn, Estonia





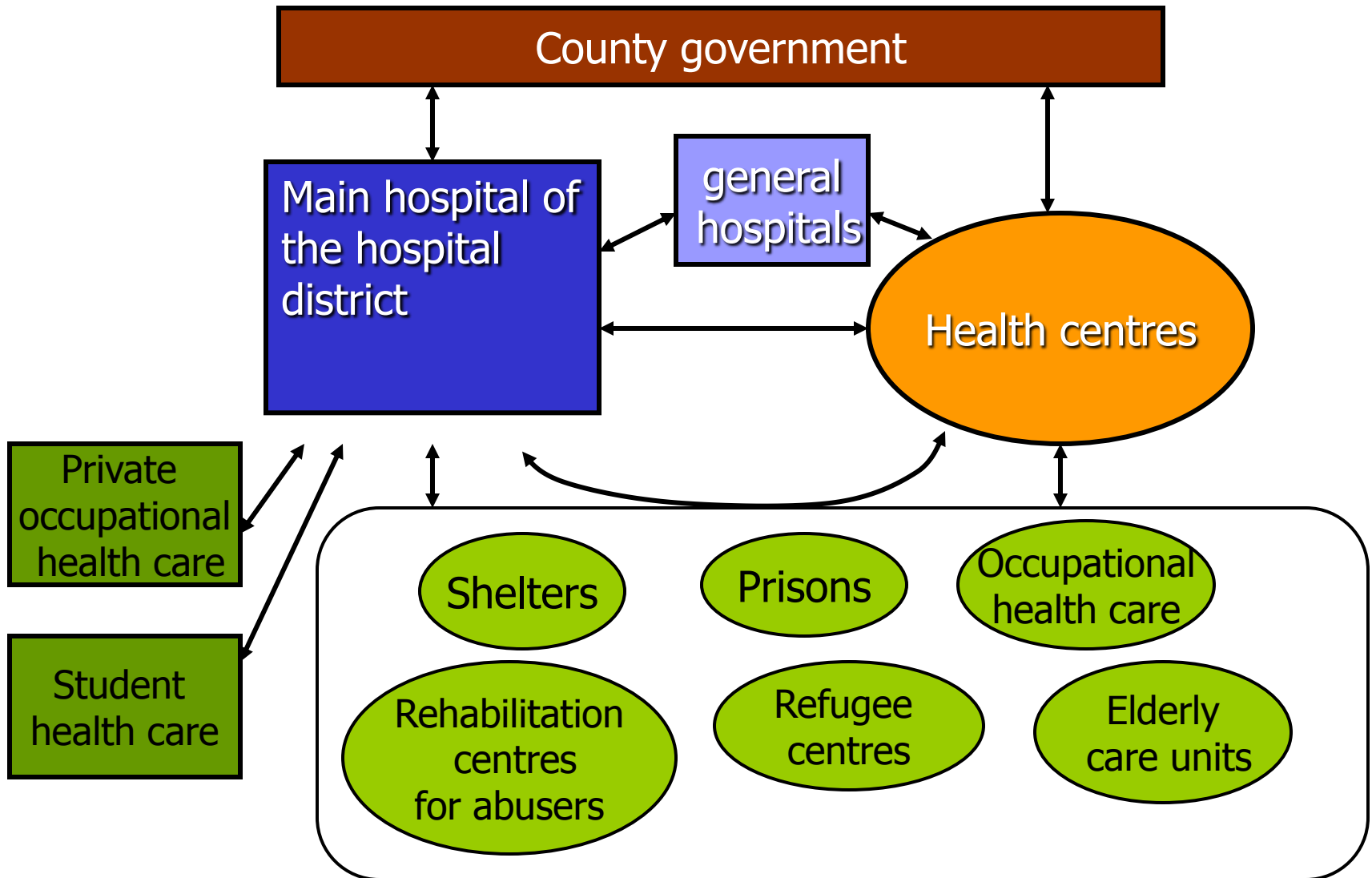
Lapland

- 6 - 24 TB cases per year
- Incidence 3,2 (– 12,9)
- Long distances to services
- One open prison
- Close contacts to Murmansk Region

Regional risk group approach

- Assessing magnitudes of local risk groups
- Building coalitions with care providers

Different parties in TB control in hospital districts



Improvements still needed in research and surveillance

- Identification of risk groups
- Improved monitoring of effects of interventions like contact tracing etc.
- Analysis of delays in diagnosis and treatment
- Number and results of LTBI treatment

Thank You for your attention !

